

INSTALLERING AV ARCHITERRA FOR ARCHICAD

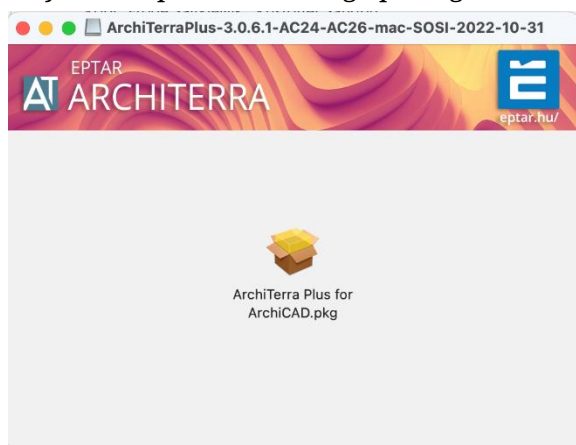
- A) Nedlasting og installering
- B) Registrere lisensen
- C) Start ArchiTerra

A) Nedlasting og installering

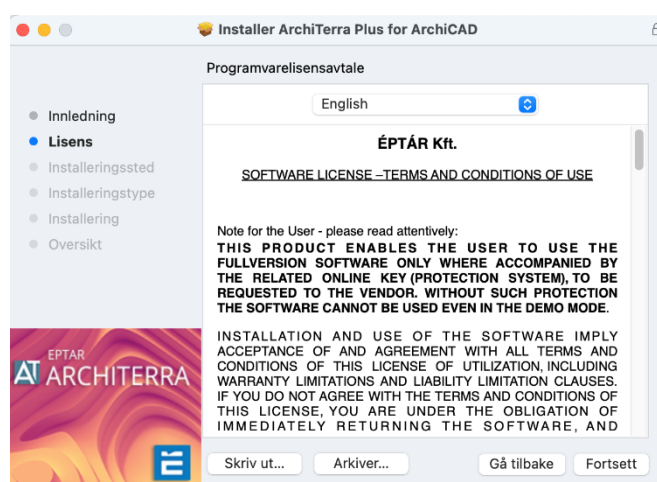
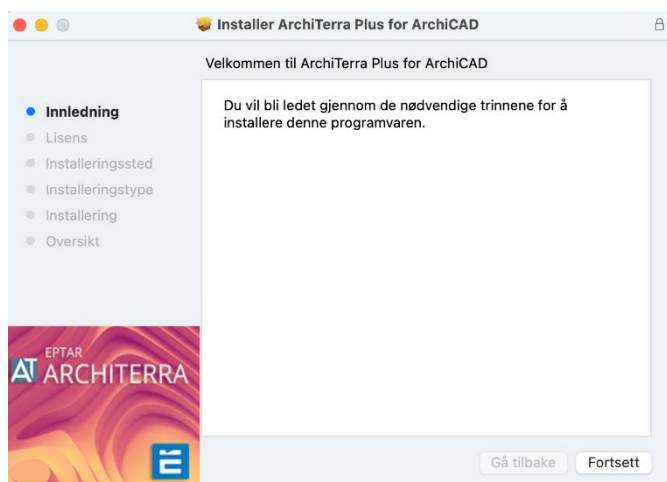
Gå til www.architerra.no

Last ned ArchiTerra med SOSI-import for Mac ved å trykke på eple symbolet.

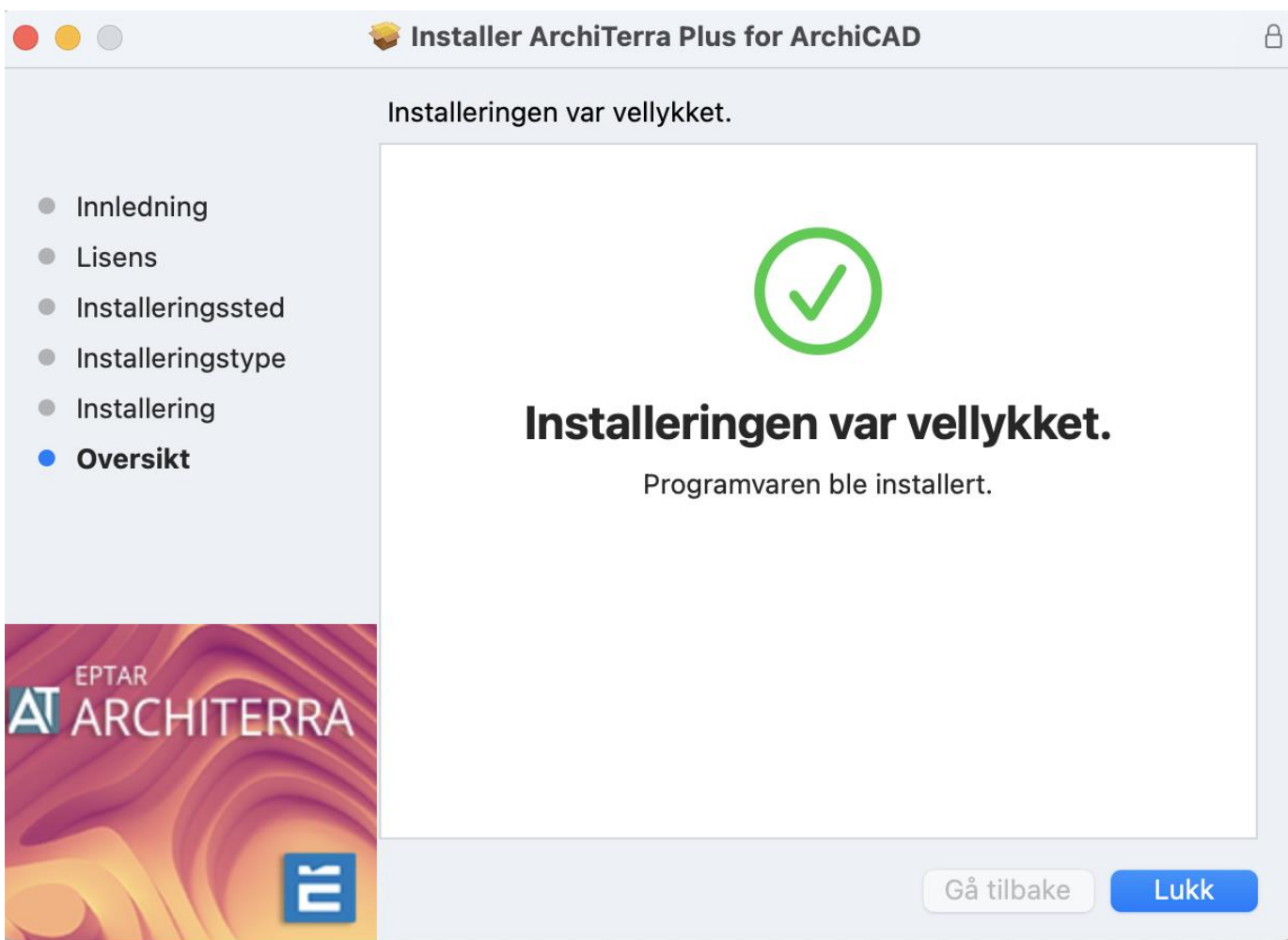
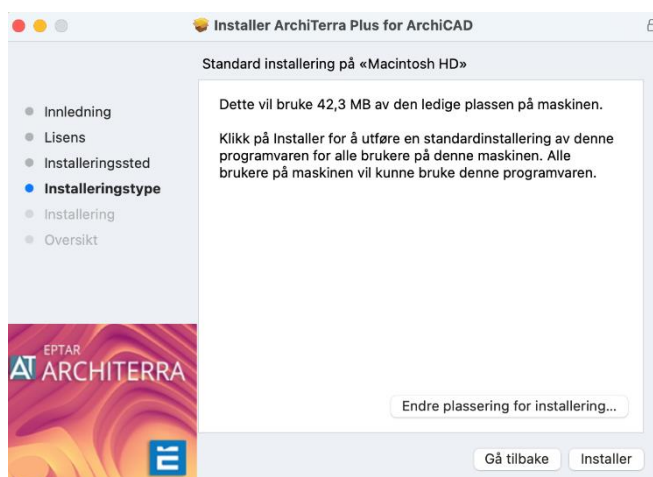
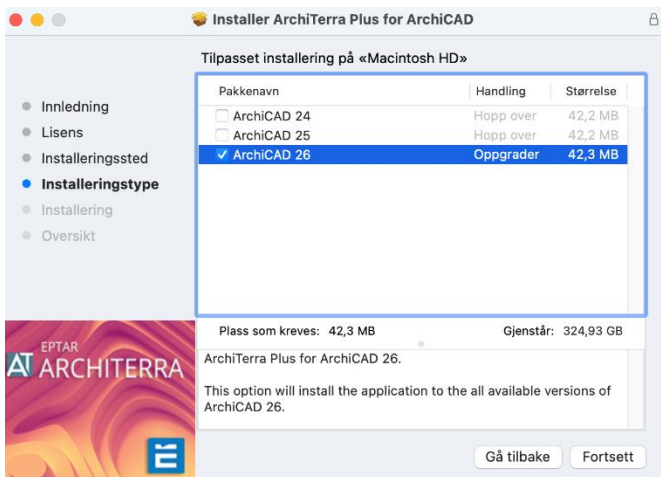
Høyreklikk på ikonet å velg åpne og tillat.



Trykk fortsett og følg veiledningen.

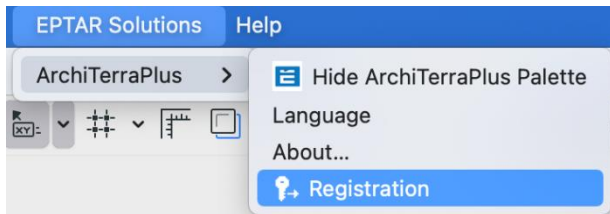


Velg ønsket versjon og klikk fortsett.

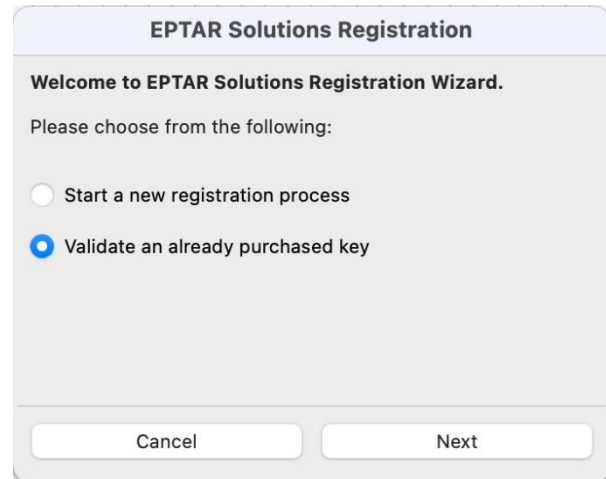


B) Registrere lisensen

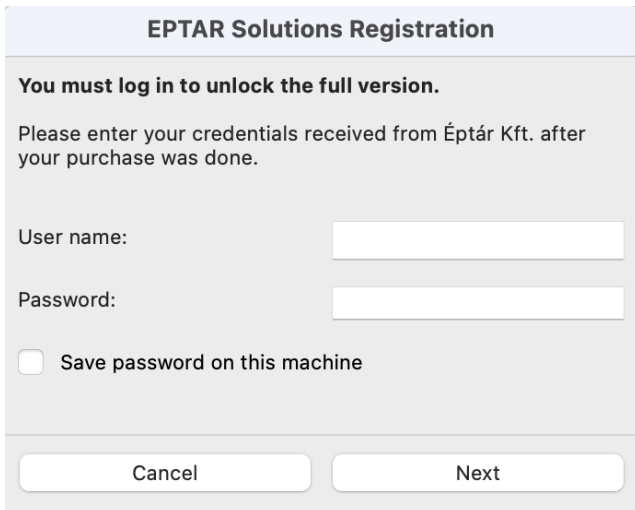
Åpne ArchiCAD. Velg ÉPTÁR Solutions nedtrekksmeny>ArchiTerraPluss>Registration.



Velg Validate an already purchased key



Skriv inn brukernavn og passord du har fått på e-post i ordrebekreftelsen din

A screenshot of the 'EPTAR Solutions Registration' dialog box. The title bar reads 'EPTAR Solutions Registration'. The main text says 'You must log in to unlock the full version. Please enter your credentials received from Éptár Kft. after your purchase was done.' There are two input fields: 'User name:' and 'Password:'. Below the input fields is a checkbox labeled 'Save password on this machine'. At the bottom, there are 'Cancel' and 'Next' buttons.

C) Slik starter man ArchiTerraPluss

Åpne ArchiCAD. Velg ÉPTÁR Solutions nedtrekksmeny>ArchiTerraPluss>Show ArchiTerraPluss Palette.

